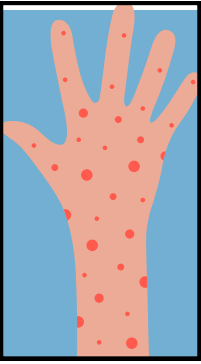


MEASLES: GET IN THE KNOW



Measles is caused by a virus in the body that spreads easily through the air and settles on surfaces. It is the single most contagious infection in human history. Most people are able to recover after about 10 days and usually do not cause long-term medical issues. However, measles can be deadly, especially for young children and individuals within weakened immune systems. Outbreaks of the virus are more common among the unvaccinated.

SYMPTOMS AND SIDE EFFECTS



Flu-like: fever, dry cough, runny nose, sore throat, body aches, lethargy, conjunctivitis, etc



Tiny white spots inside the month



Body rash - large, flat spots and small raised bumps starting on the face or neck and spreads downwards



Hospitalization and even death



Pneumonia



Inflammation of the brain, which can lead to long-term brain damage and disability



The virus can spread four days before a rash appears and four days after. Around 90% of people who have never been infected or have not been vaccinated will become infected after coming in contact.

WHY HAS MEASLES ACTIVITY INCREASED?

Measles was declared eliminated in the United States in 2000, a public health triumph attributed to widespread vaccination with the highly effective measles, mumps, and rubella (MMR) vaccine.

➔ U.S. MMR coverage among kindergarteners is now below the 95% coverage target—much lower in some communities—and is decreasing.

➔ Measles is not a seasonal virus. However, measles is often spread over times of high travel (holidays) or in situations where unvaccinated persons are in close quarters (sleepaway camps).

PROTECT YOURSELF AND OTHERS



Discuss the MMR vaccine with your healthcare provider. Two doses of MMR vaccine are 97% effective at preventing measles, 1 dose is 93% effective.



Avoid unnecessary travel, especially in high traffic airports, subways/train stations, and bus stations. Use caution in any travel scenario.



Be mindful of your current health position and of those close to you. Use best immuno-compromised practices.

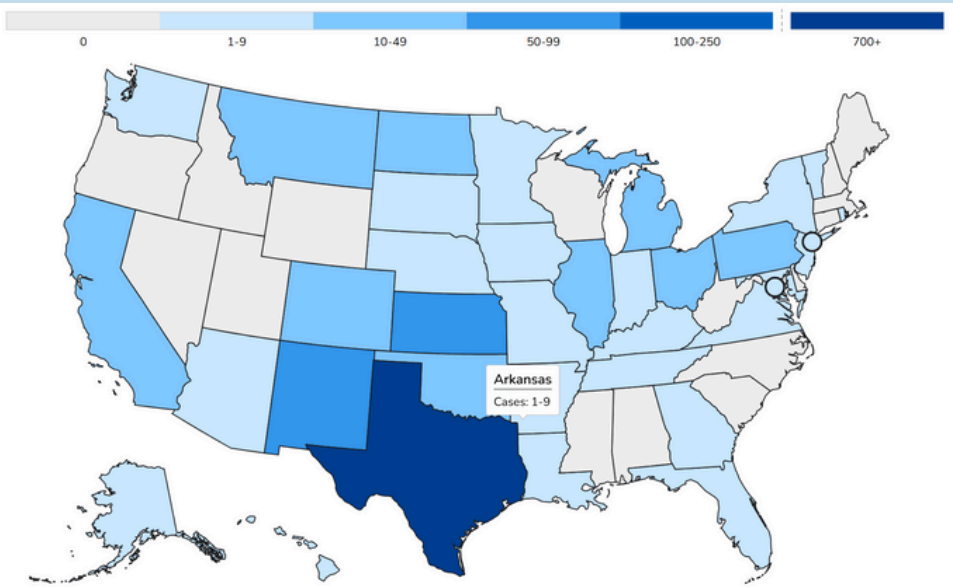


Keep up to date with the latest numbers and what you need to know to prepare - link: [Measles on the Rise: How to Prepare and Respond in Your Clinic | Infectious Diseases | CDC's Project Firstline | AMA Ed Hub](#)

CONFIRMED U.S. CASES AND OUTBREAKS

As of June 19, 2025, a total of 1,214 confirmed* measles cases were reported by 36 jurisdictions:

Alaska, Arkansas, Arizona, California, Colorado, District of Columbia, Florida, Georgia, Hawaii, Illinois, Indiana, Iowa, Kansas, Kentucky, Louisiana, Maryland, Michigan, Minnesota, Missouri, Montana, Nebraska, New Jersey, New Mexico, New York City, New York State, North Dakota, Ohio, Oklahoma, Pennsylvania, Rhode Island, South Dakota Tennessee, Texas, Vermont, Virginia, and Washington.



U.S. CASES

Age:	Vaccination Status:
Under 5 years: 350 (29%)	Unvaccinated or Unknown: 95%
5-19 years: 450 (37%)	One MMR dose: 2%
20+ years: 399 (33%)	Two MMR doses: 3%
Age unknown: 15 (1%)	

U.S. DEATHS

There have been 3 confirmed deaths from measles.

U.S. HOSPITALIZATIONS

12% of cases hospitalized (146 of 1214)
Percent of Age Group Hospitalized
Under 5 years: 21% (72 of 350)
5-19 years: 8% (35 of 450)
20+ years: 10% (38 of 399)
Age unknown: 7% (1 of 15)

Measles Cases and Outbreaks

Measles in Montana

Last updated: 6/23/2025 3:03:33 PM

Choose Date Range of Measles Cases:
1/1/2025 6/15/2025

This dashboard displays reported cases of measles in Montana residents. Cases are classified as recent or recovered. A "recent case" becomes classified as a "recovered case" 21 days after they are no longer contagious (a measles case is no longer contagious 4 full days after rash onset). During these 21 days, public health monitors contacts to identify new cases and stop the spread of illness.

This dashboard updates every weekday (Monday through Friday, excluding holidays) using data from the Montana Infectious Disease Information System (MIDIS), as it appeared at 5:00 pm Mountain Time the previous day.

Recent Measles Activity

Recent cases
6
Counties with recent cases
2

Measles Cases by County

County	Recent Cases	Total Cases
Gallatin	5	15
Hill	1	4
Flathead	0	2
Yellowstone	0	2
Total	6	23

Measles Cases by Age Group

Age Group	Case Count
0-4 years old	1
5-19 years old	14
20+ years old	8

Overall Measles Activity

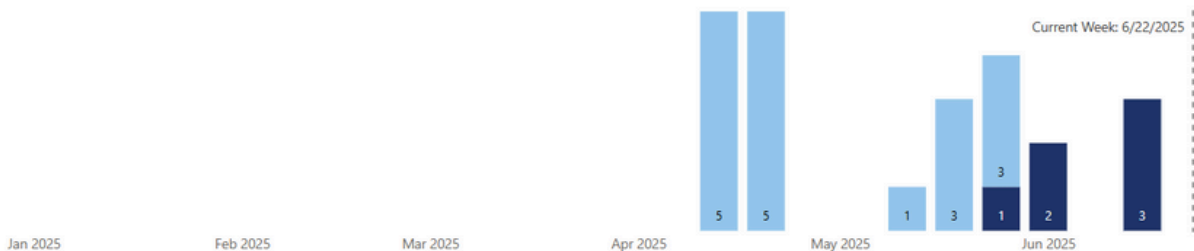
Total measles cases
23
Measles hospitalizations
2
Measles deaths
0

Count of Cases

Measles Cases by Onset Week

For accessible chart, press Ctrl+Shift+F11

Recent Cases Recovered Cases



Keep up to date with Montana DPHHS for state measles news, education, and information at <https://dphhs.mt.gov/publichealth/cdepi/diseases/measles>