

MSU Technology Transfer

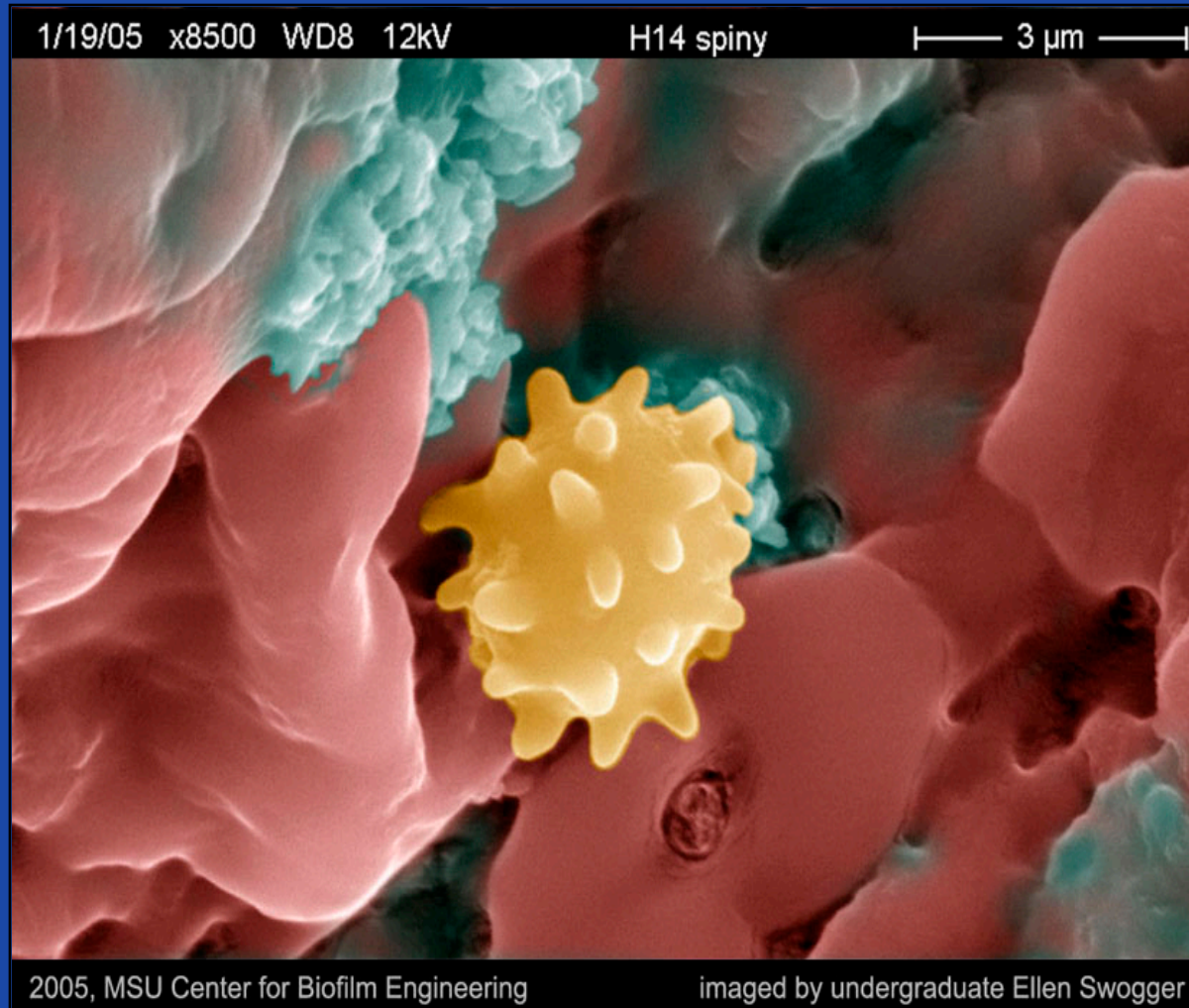
Montana Medical Association

November 21, 2014

Medical/Health-Related Research Areas

- Anti-Inflammatories
- Drug Resistant Microbes - MRSA
- Anti-Fungals
- Pulmonary Immunology
- CRISPR
- Wound Healing - Biofilms

Biofilm in Chronic Wounds



Research in Microbiology and Immunology



Intestinal
Pathogens



Anthrax
Bacilli



Plague
Bacteria

Medical Technologies Currently Available

- Metabolite Extraction Chip – real-time monitoring of metabolites
- Inhibitor of Cancer Cell Aggregation – Dendrimers that block binding sites on cancer cells – minimizes tumor metastasis
- Hand-held spectroscopy probe to detect skin cancer – confocal microscopy.
- CRISPR – gene editing tool that can edit out foreign materials.

Teamwork in Developing Inventions

- Multidisciplinary research
- InterInstitutional collaborations
- Collaboration with the TTO
- Working with patent counsel
- Responsiveness to potential licensees
- Working with licensee to enable the invention

Successes in the TTO Process

- See products move forward toward the market
- The licensed technology is not always the success – Takeda
- Start-up/Spin-out companies

Challenges and Gaps For TTO

- Early-stage research/inventions
- Fewer companies in Montana
- Fewer entrepreneurs in Montana
- Less capital available in Montana
- Patient Process

How Can Physicians Interact?

- With WWAMI move to Bozeman Deaconess, this will help.
- If you have interests in particular technological areas, let me know.
- Watch MSU Homepage – developments highlighted.

Rebecca R. Mahurin, Ph.D.
Director
MSU Technology Transfer

304 Montana Hall
MSU

406-994-7868

Rmahurin@montana.edu